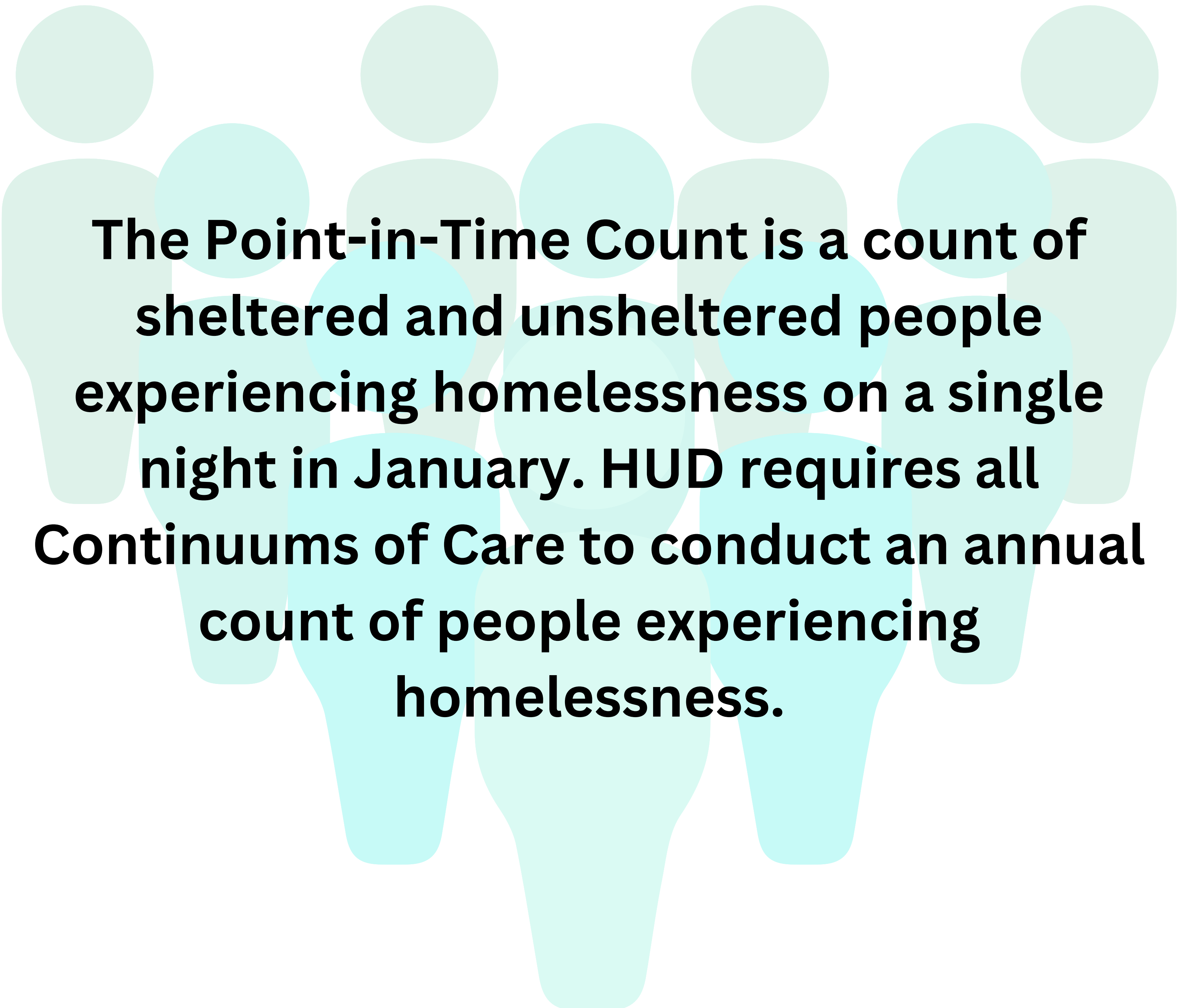


2024 Point In Time Count



**AR
Balance
of State**

What is the PIT Count?



The Point-in-Time Count is a count of sheltered and unsheltered people experiencing homelessness on a single night in January. HUD requires all Continuums of Care to conduct an annual count of people experiencing homelessness.

Arkansas Balance of State Continuum of Care 2024 PIT Count



**Sheltered only count was conducted this year.*

Under 18: 48

18-24: 48

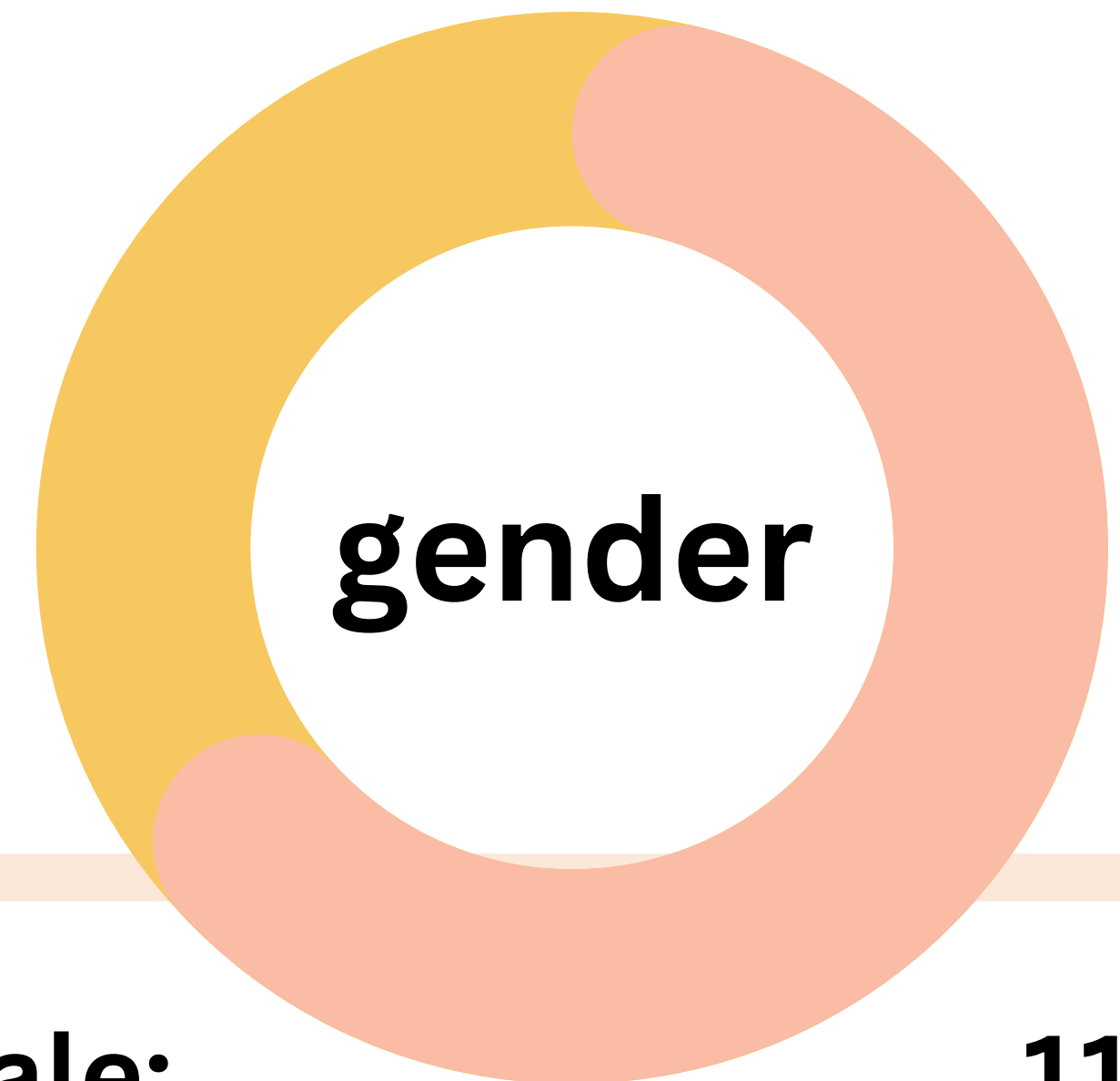
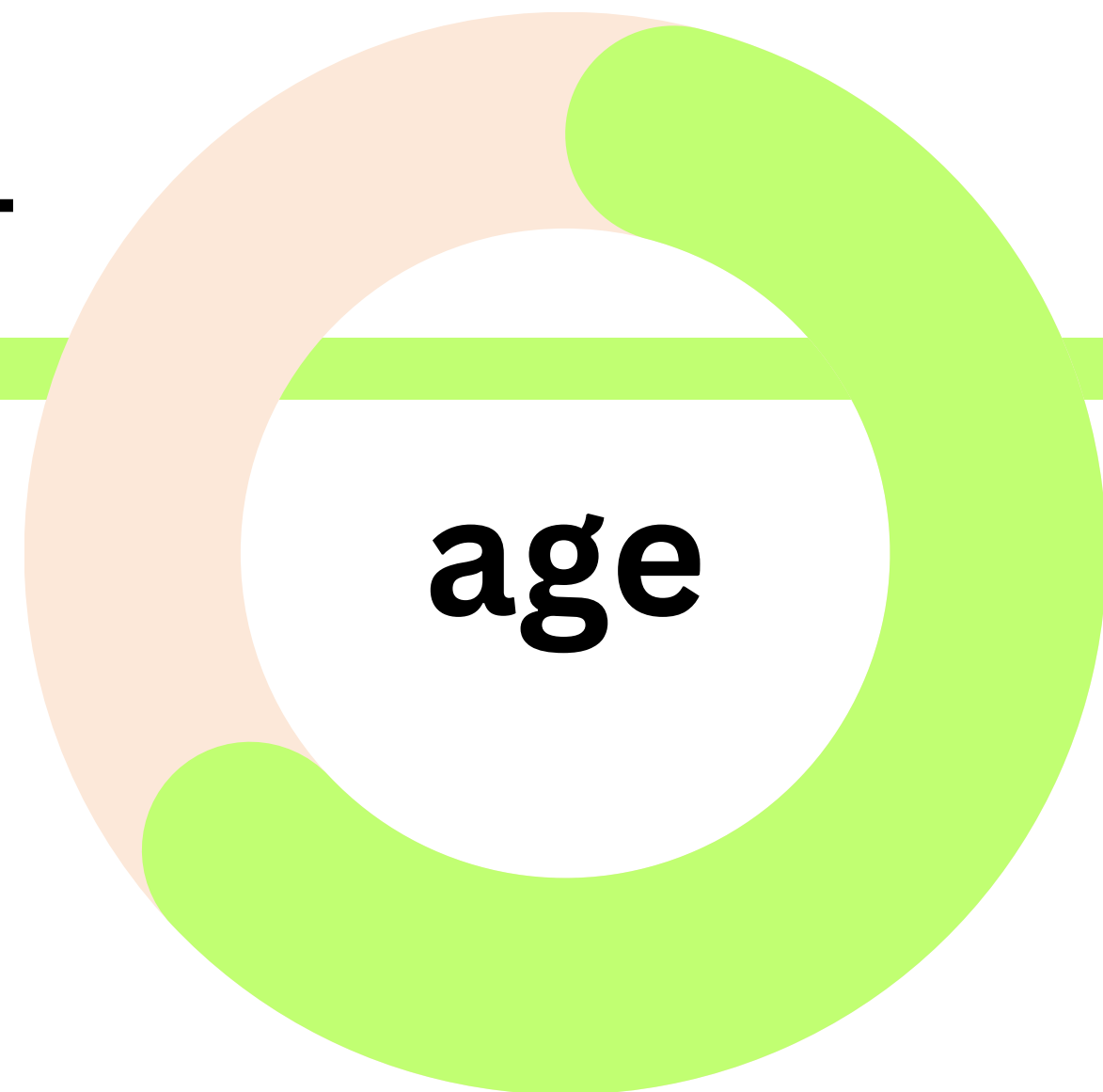
25-34: 63

35-44: 64

45-54: 46

55-64: 48

65+ 19



Male: 111

Female: 223

Questioning: 1

Transgender: 1

Nonbinary: 0

**American Indian/ Alaskan
Native/Indigenous: 3**

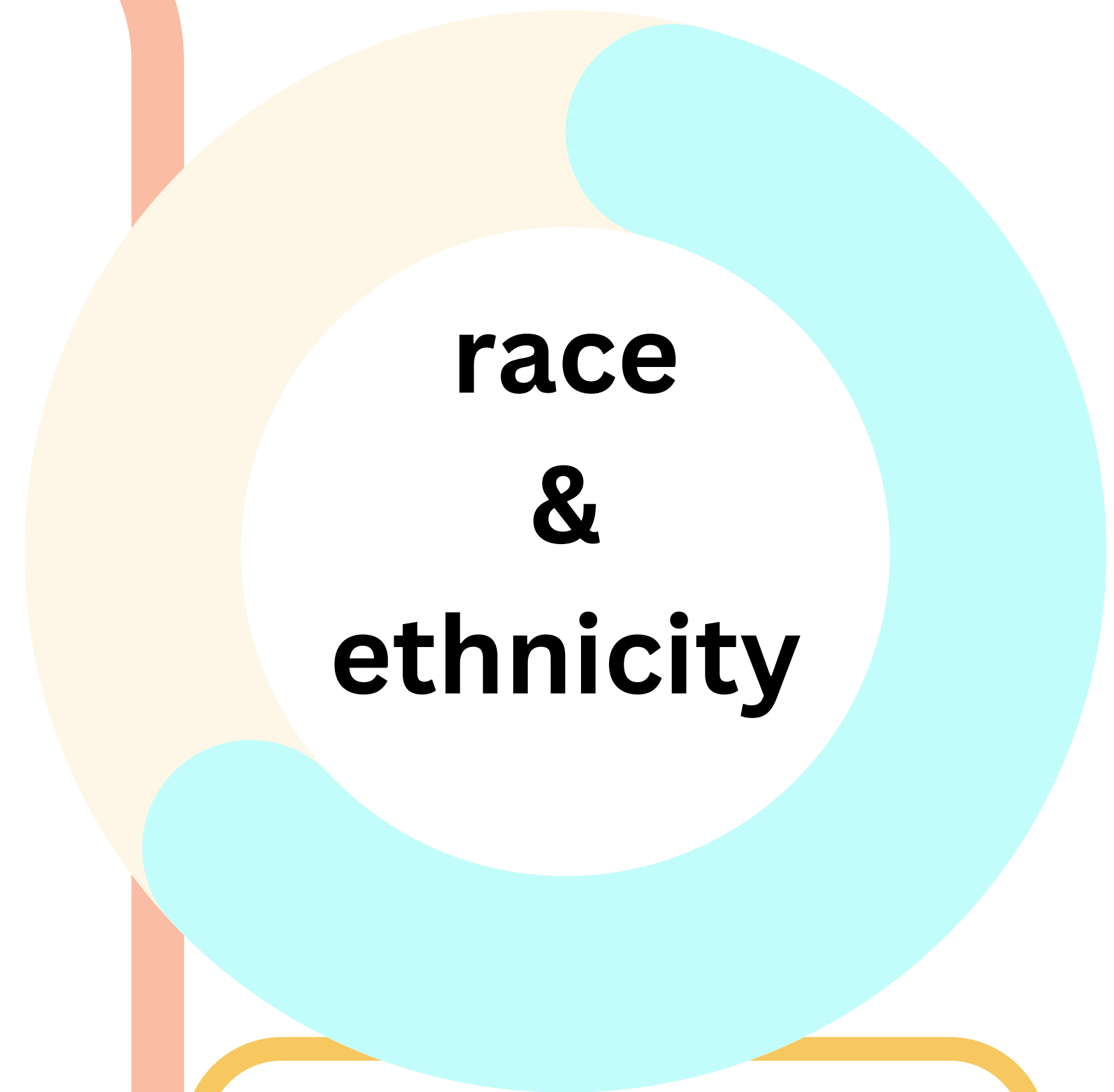
Asian or Asian American: 8

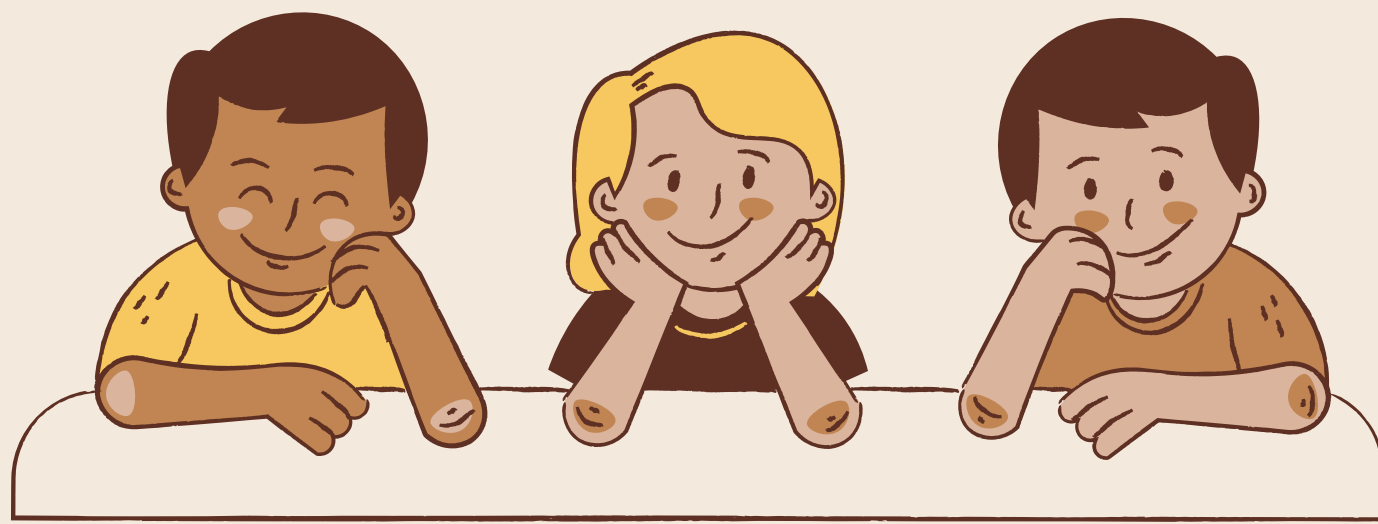
**Black, African American, or
African: 60**

**Native Hawaiian or Pacific
Islander: 0**

White: 251

Multiple Races: 14





21

**Unaccompanied
Youth (0-24)**

33



Veterans

2



Parenting Youth

38

**Chronically
Homeless**

17

**Mental
Health
Illness**

16

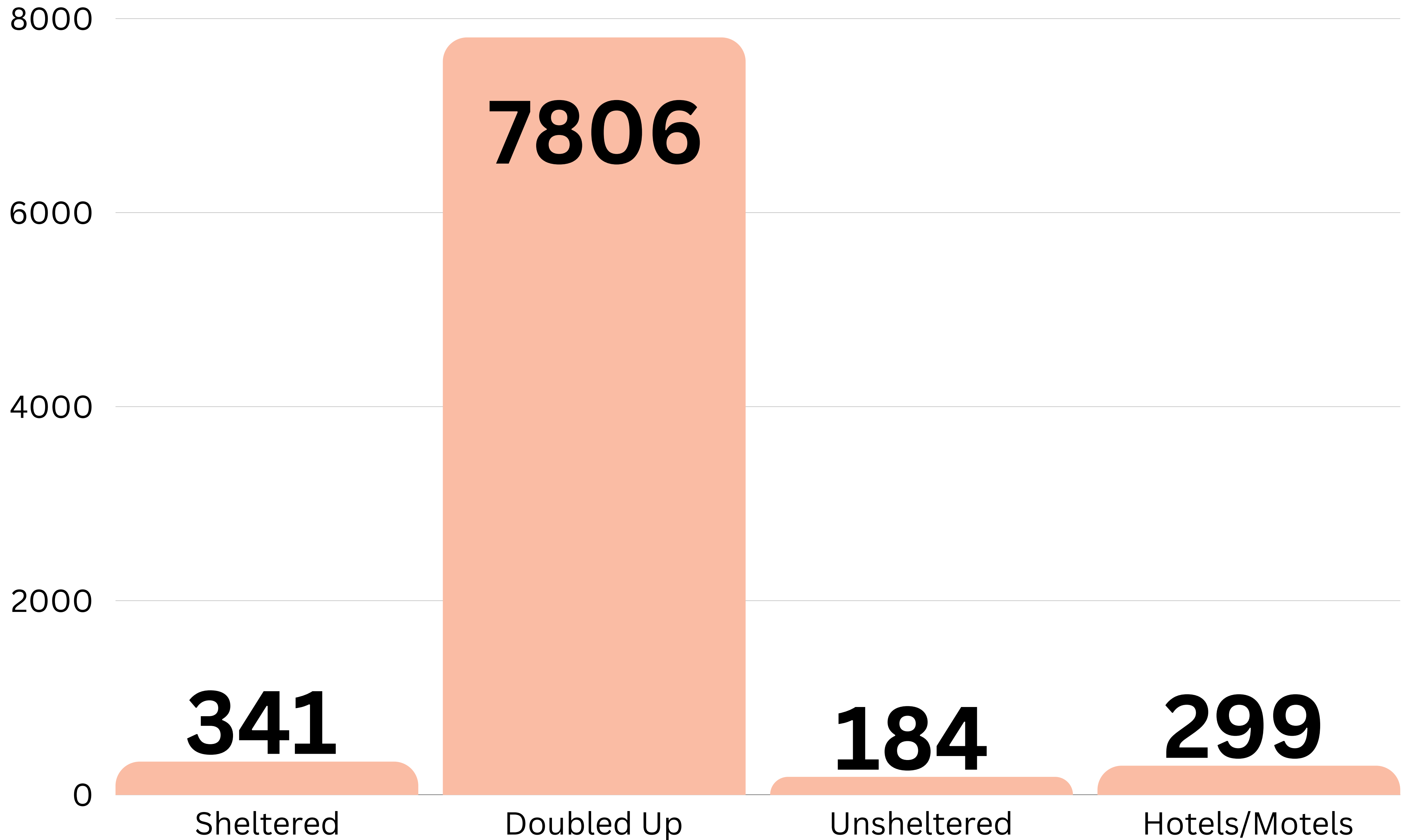
**Substance
Use
Disorder**

30

**Survivors
of
Domestic
Violence**

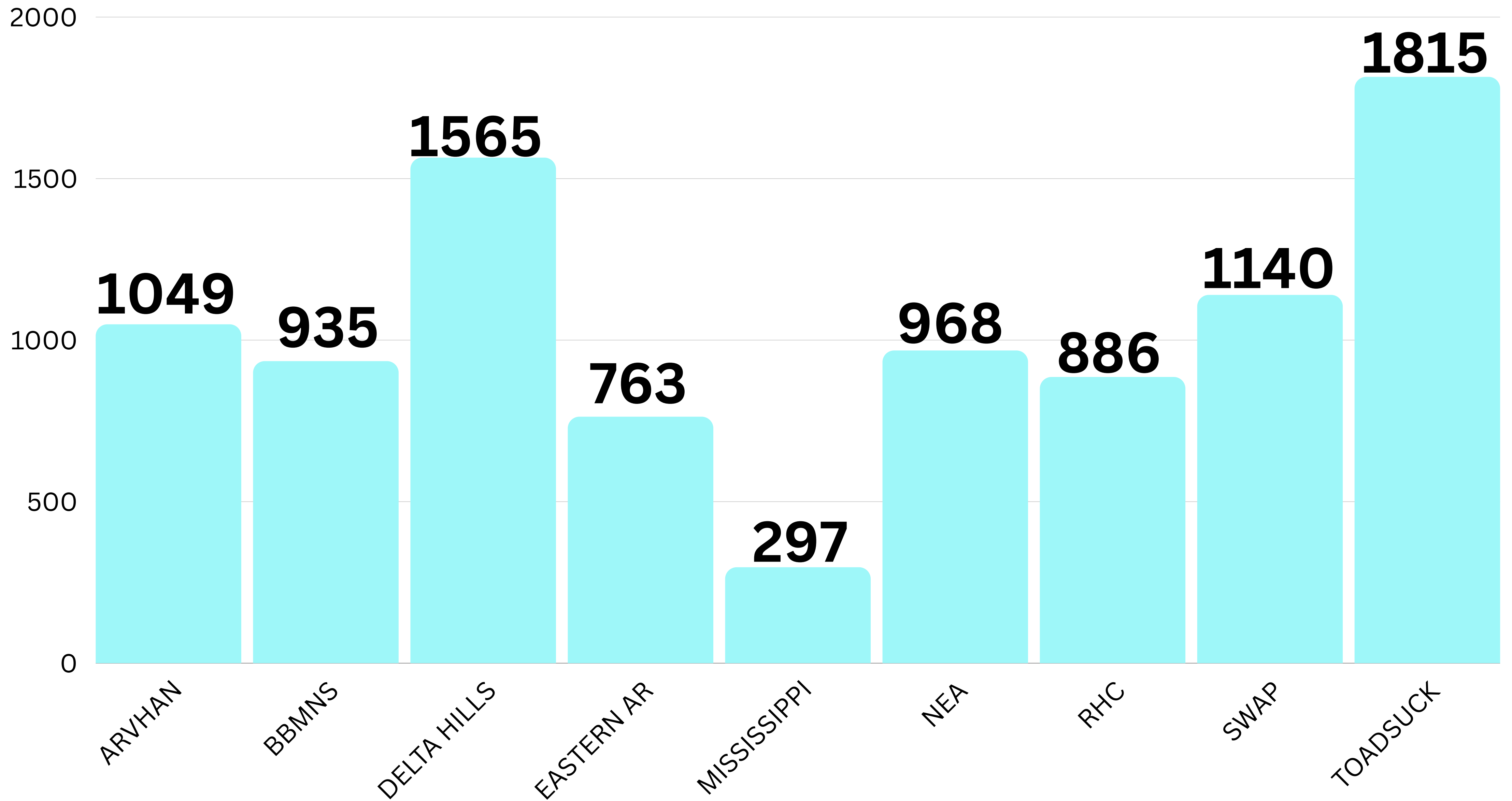
This data only applies to adults (18+) that were surveyed during the PIT.

Homeless Enrollment by Type Data 2023-2024



Homeless By Type by County : Counties : ADE Data Center (arkansas.gov)-as reported by public school districts to Arkansas Department of Education

QTR 2 Student Homeless Enrollment Data 2023-2024



Homeless by County : Counties : ADE Data Center (arkansas.gov)-as reported by public school districts to Arkansas Department of Education

Key Info/Terms Regarding PIT

- **Date of the PIT:** 1/24/2024
- **Sheltered Homelessness:** Adults, Children, and Unaccompanied Children who, on the night of the of the count, are living in shelters.
- **Emergency Shelter:** Any facility with the primary purpose of providing temporary shelter for the homeless in general or for specific populations of the homeless.
- **Transitional Housing:** Program that provides temporary housing with supportive services to individuals and families experiencing homelessness with the goal of interim stability and support to successfully move to and maintain permanent housing.

- **Youth:** Persons under age 25.
- **Unaccompanied Youth:** Any persons under age 25 who are not accompanied by a parent or guardian or any other household member age 25 or older, and who are not a parent presenting with or sleeping in the same place as his/her child(ren).
- **Parenting Youth:** A youth who identifies as the parent or legal guardian of one or more children who are present with or sleeping in the same place as that youth parent, where there is no person age 25 or older in the household.
- **Chronically Homeless:** A person who:
 - Is homeless and lives in a place not meant for human habitation, a safe haven, or in emergency shelter; and
 - Has been homeless and living or residing in a place not meant for human habitation, a safe haven, or in an emergency shelter continuously for at least 1 year or on at least four separate occasions in the last 3 years where the combined length of time homeless in those occasions is at least 12 months; and
 - Has a disability.

Balance of State Continuum of Care Contact Information

Whitney Force, Homeless Programs Director

wforce@occnnet.org

www.arboscoc.org

Arkansas Balance of State Continuum of Care | Facebook