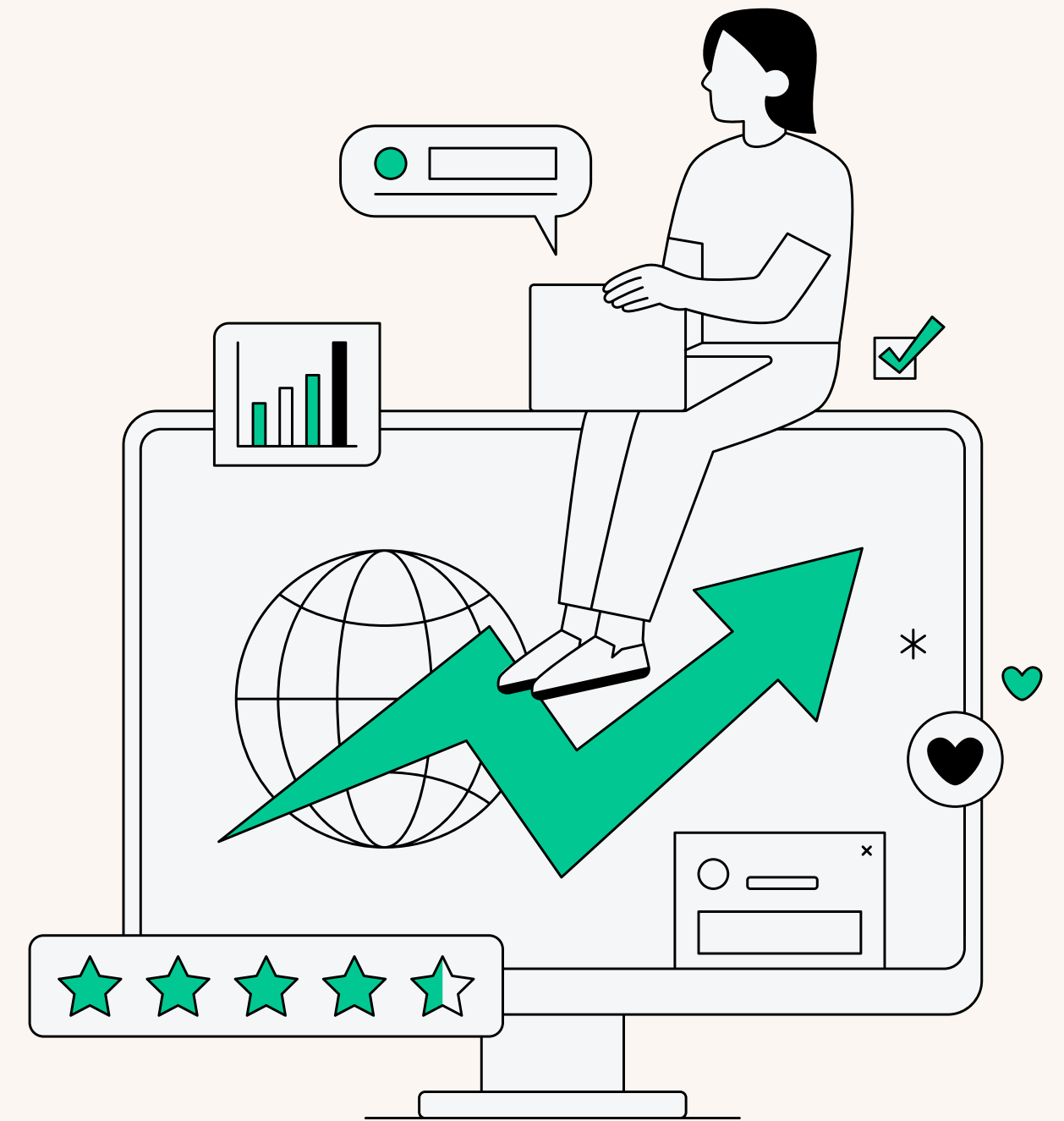


Presented by Whitney Force

Why HMIS?

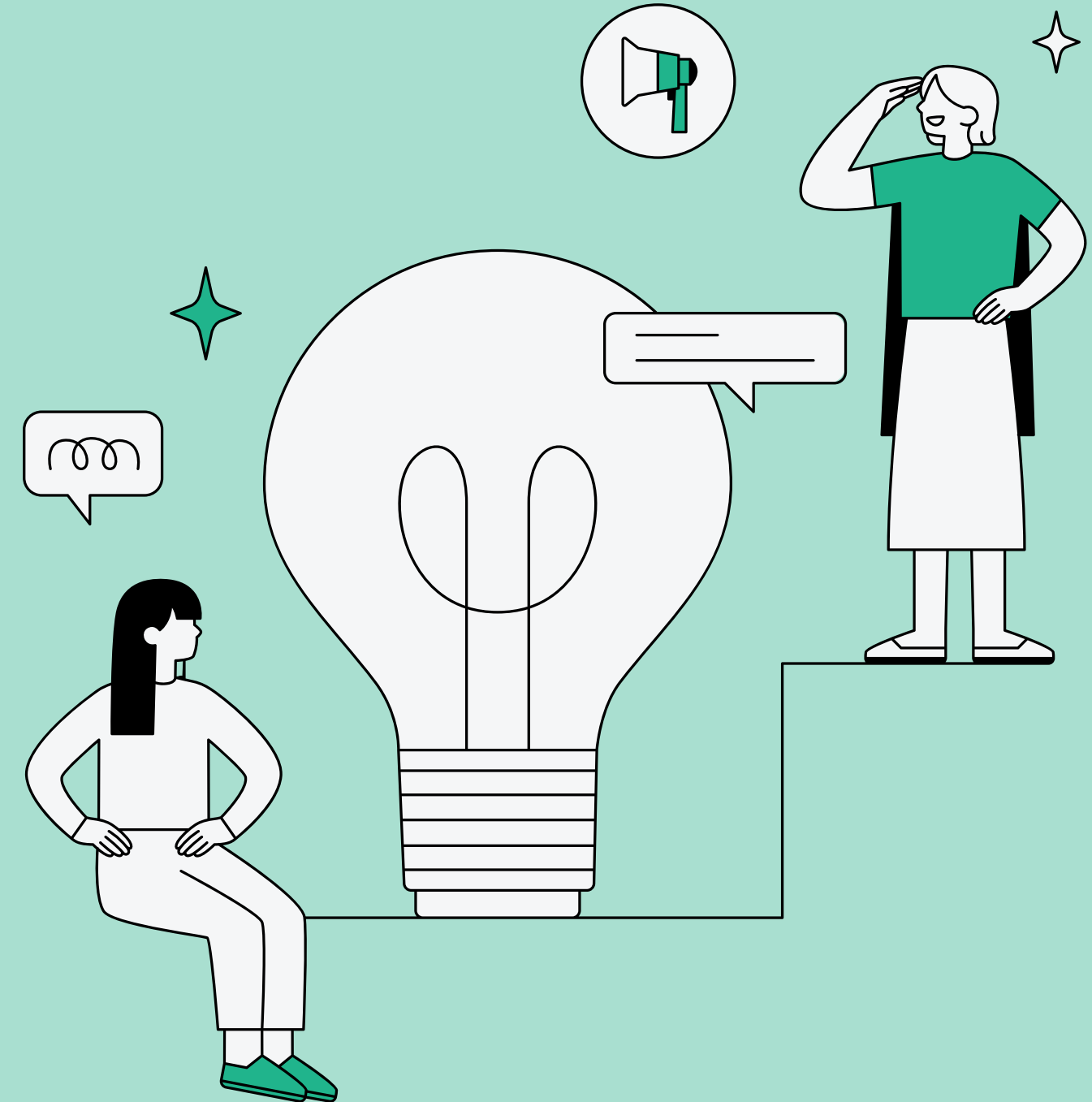
Importance of the system

www.arboscoc.org



What is HMIS?

HMIS refers to the Homeless Management Information System (HMIS), the system used to collect client-level data and data on the provision of housing and services to program participants. The HEARTH Act requires that all communities have an HMIS and collect information from their CoC and ESG-funded projects. CoC recipients must submit an Annual Performance Report (APR) and ESG recipients must submit a Consolidated Annual Performance and Evaluation Report (CAPER) using their HMIS data.—HUD Exchange



Frequently Used Terms

HMIS Lead

Entity designated by Continuum of Care to operate the HMIS on the Continuum's behalf.

OCYFS, Inc.

HMIS System Admin

The person at the lead agency who oversees the system for the Continuum.

Brandon Turner

HMIS End User

The person who enters data into the system or uses the system.

All users in BoS

Frequently Used Terms

HMIS Vendor

HMIS software provider, web server host, or data warehouse provider.

Wellsky

Program

Refers to the federal funding source

HUD CoC, HUD ESG, PATH, VA SSVF, etc

Project

Refers to a distinct unit of an organization as set up in the HMIS.

RRH, HP, ES, SO

Universal Data Elements

Elements required to be collected by all projects participating in HMIS, regardless of funding source.

The foundation on which the Longitudinal System Analysis (LSA) is developed.



Universal Identifier Elements

ONLY 1 per client record

3.01

Name

3.02

**Social
Security
Number**

3.03

Date of Birth

3.04

**Race and
Ethnicity**

3.06

Gender

3.07

**Veteran
Status**

Universal Project Stay Elements

1 or more per client, 1 only per project stay

3.08

**Disabling
Condition**

3.10

**Project
Start Date**

3.11

**Project
Exit Date**

3.12

Destination

Universal Project Stay Elements

1 or more per client, 1 only per project stay

3.15

**Relationship to
Head of
Household**

3.16


**Enrollment
CoC**

3.20

**Housing
Move-In Date**



Q: I entered the
data, so how is it
used?



A: To make informed decisions!



- Longitudinal Systems Analysis is developed yearly from HMIS data
- LSA is used to inform the Annual Homeless Assessment Report (AHAR) which provides data to Congress regarding homelessness and the use of assistance
- AHAR is critical piece to informing the Interagency Council on Homelessness and other federal partners on nature of homelessness
- Allows local communities to see how data has changed over time



Q: Why is HMIS
so important?



A: It is used to tell the story



- Shares data on a local level
- Helps local communities understand what homelessness looks like in that area, how many people are chronically homeless, and the characteristics of those being served
- Shows what programs are most effective at reducing homelessness



Q: What is Data
Quality?



A: The reliability and comprehensiveness of your community's data



- **Timeliness:** degree to which data is entered and readily available
- **Completeness:** Collecting and entering **ALL** required data elements into HMIS
- **Accuracy:** Reflects the real-world client or service
- **Consistency:** Data is equivalent in the way it is collected and stored



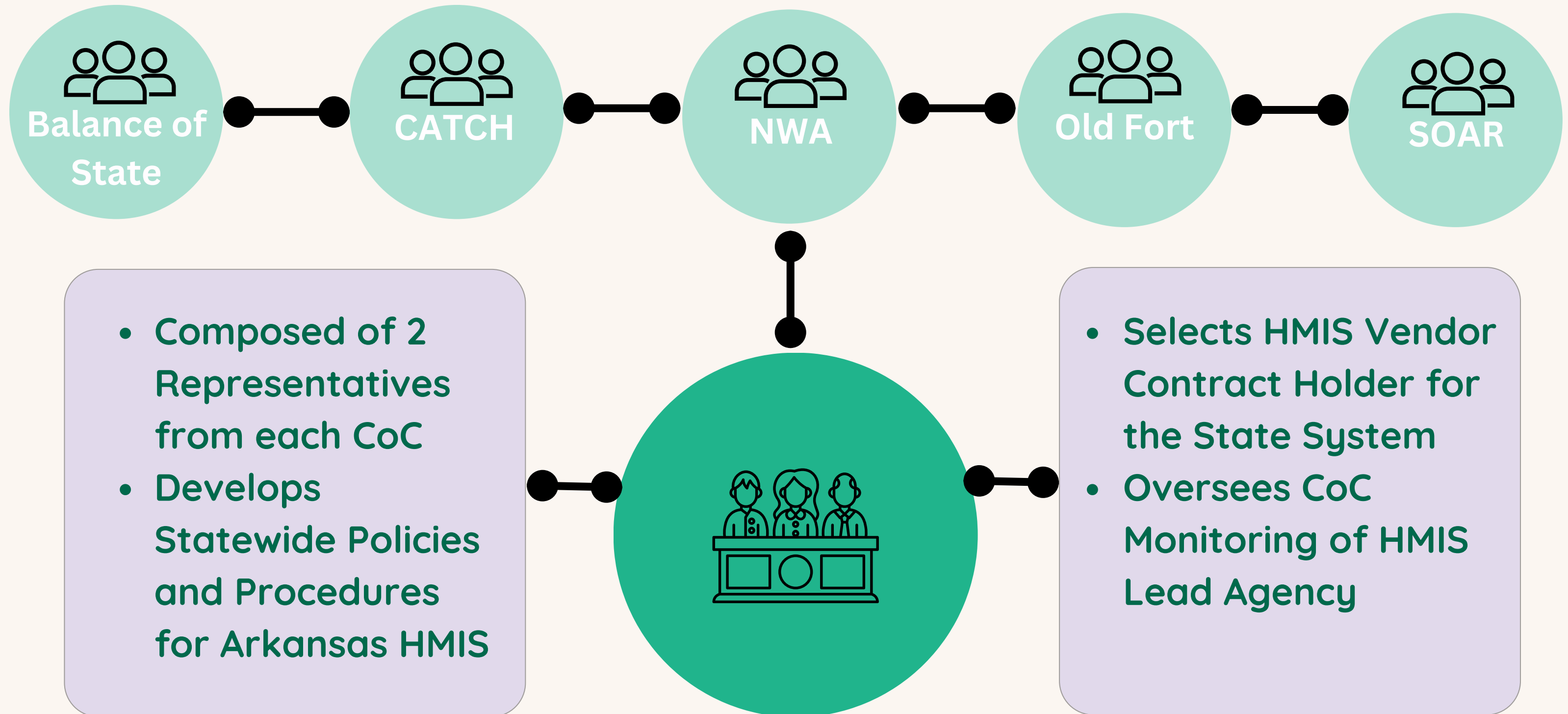
Q: What is a
comparable
database?



A: A comparable database is a relational database that meets all HMIS Data Standards and does so in a method that protects the safety and privacy of the survivor



HMIS Steering Committee



HMIS Lead Agencies



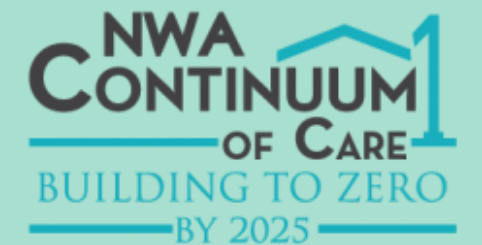
OCYFS, Inc.
(BoS)

- Management of System
- Develop, Implement, and monitor use of Policies and Procedures
- Assisting to increase HMIS participation in CoC
- Monitor agencies use of HMIS
- Ensure privacy plans are in place and followed
- Administration and maintenance of system
- Ensure reports needed can be generated and submitted



People's Trust
(CATCH)

- Develop and Implement Technical Support System
- Provide training to end users
- Ensure security plans are in place and followed
- Ensure data quality plan is developed and implemented
- Assist in development on data analysis plan



NWA
(NWA and SOAR)



Riverview Hope
Campus
(Old Fort)

Resources/References

<https://files.hudexchange.info/resources/documents/HMIS-Data-Standards-Manual-2024.pdf>

<https://files.hudexchange.info/resources/documents/HMISFactSheet.pdf>

<https://files.hudexchange.info/course-content/data-quality-101-what-is-dq/Data-Quality-101-What-is-DQ-Slides.pdf>

<https://files.hudexchange.info/resources/documents/FY-2024-HMIS-Comparable-Database-Manual.pdf>

Contact Information

Whitney Force, Director

501-431-7041

wforce@occnnet.org

Brandon Turner, HMIS Regional Coordinator

501-652-1919

bturner@occnnet.org

Thank
you very
much!

